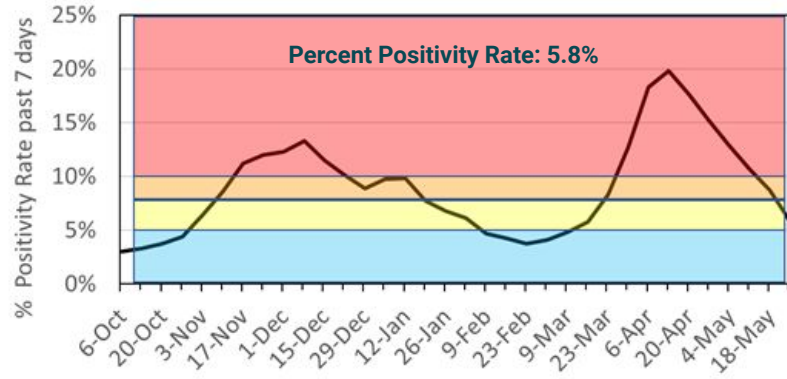
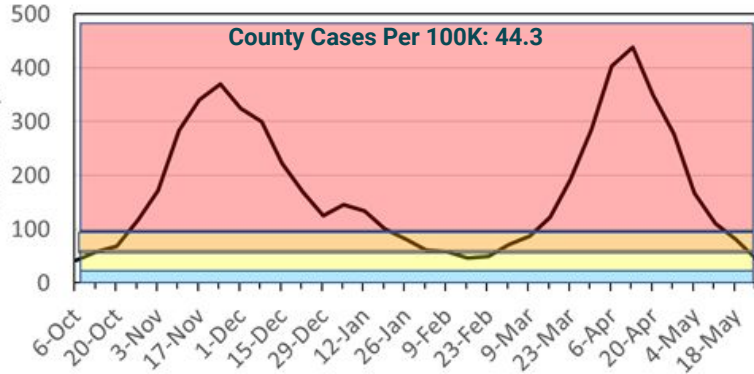


# Grosse Pointe Public School System - COVID-19 Weekly Data

June 2, 2021 Dashboard



County Cases per 100K  
in last 7 days



## GPPSS District Totals as of June 2, 2021

<b>Quarantined Staff</b> <b>0</b>	<b>Positive Staff</b> <b>1</b>	<b>Quarantined Students</b> <b>19</b>	<b>Positive Students</b> <b>2</b>
--------------------------------------	-----------------------------------	--	--------------------------------------

### ELEMENTARY SCHOOL TOTALS - WEEKLY

<b>Quarantined Staff</b>	<b>0</b>
<b>Quarantined Students</b>	<b>1</b>
<b>Positive Staff</b>	<b>0</b>
<b>Positive Students</b>	<b>0</b>

### MIDDLE SCHOOL TOTALS - WEEKLY

<b>Quarantined Staff</b>	<b>0</b>
<b>Quarantined Students</b>	<b>16</b>
<b>Positive Staff</b>	<b>1</b>
<b>Positive Students</b>	<b>2</b>

### HIGH SCHOOL TOTALS - WEEKLY

<b>Quarantined Staff</b>	<b>0</b>
<b>Quarantined Students</b>	<b>2</b>
<b>Positive Staff</b>	<b>0</b>
<b>Positive Students</b>	<b>0</b>

*This information is a summary of student and staff absences due to a positive COVID situation or a COVID exposure. All data is "as of" the dates indicated. Detailed information by school building can be found on our website under "GPPSS Tracking" at [this link](#).*

# Grosse Pointe Public School System - COVID-19 Weekly Data

## June 2, 2021 Dashboard

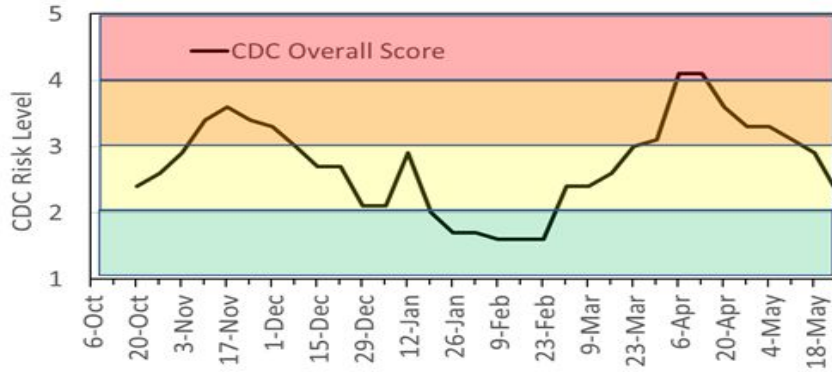


The purpose of this dashboard is to provide the GPPSS Community with an accurate and up-to-date summary of key metrics that measure COVID transmission risk and impact on the local health care system. The dashboard is modeled off of the recently released Centers for Disease Control (CDC) Indicators and Thresholds for Community Transmission of COVID-19 (released February 12, 2021). The Dashboard includes 2 Core Indicators (metrics):

- a) Total new cases per 100,000 in the past 7 days (slide one)
- b) % positive COVID testing rate for Wayne County (slide one)

The chart and graphs included provide the current GPPSS score on the two Core Indicators, as well as the district's trend over the past several months on each of these metrics. Given that any one data point can be subject to statistical fluctuation, GPPSS will continue to focus on data trends as an important indicator when making decisions regarding learning options.

CDC Risk Metrics																
CDC Core Indicators (as of May 25, 2021)						CDC Secondary Indicators (as of May 25, 2021)										
# community cases/100K prev 14 days	Risk Level	% Positives prev 7 days (Wayne County)	Risk Level	School Risk Mitigation Strategy Up to 5	Risk Level	Core risk Score Ave of 7 factors 1=Lowest, 5=Highest	Trend: % change in weekly County case rate	Risk Level	Hospital occupancy	Risk Level	% ICU occupancy	Risk Level	% Covid inpatients	Risk Level	Overall risk Score Ave of 7 factors 1=Lowest, 5=Highest	
112.4	Higher	5.8%	Moderate	3	Moderate	3.3	-85%	Lowest	83%	Moderate	79%	Lowest	4.5%	Lowest	2.3	
	4		3		3			1		3		1		1		



### Sources:

**CDC Operational Strategy for K-12 Schools:**

<https://www.cdc.gov/coronavirus/2019-ncov/community/schools-childcare/operation-strategy.html>

**GP and Harper Woods Case Data:**

<https://wayne.maps.arcgis.com/apps/opsdashboard/index.html#/d04fff4645b140319fad972eb3740550>

**County Case Counts and Positivity Rate Data:**

<https://www.mistartmap.info/compare>